

Community update 23/11

Kia ora e te whānau o Oaklynn,

Ngā mihi nui ki a koutou ki to koutou whānau hoki.

As Oaklynn returns to a partially opened school, I'd like to thank our community - to our parents, carers and whānau - thank you for your patience and support as we do our best to support your tamariki and rangatahi - we know it's been tough at home.

To our Oaklynn staff a massive thank you

- Thank you for getting vaccinated - a recent article in the Herald tells us that 98% of teachers in Aotearoa have been vaccinated - and the numbers at Oaklynn are similar if not more across all of our staff.
- Thank you for getting your tests done before returning to work - never a nice experience (see below!) but you did it anyway.
- Thank you for doing your best to support our whānau in every varied and different way that you have.

koia kei a koutou!

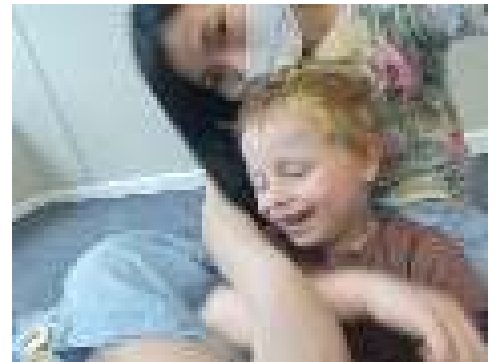
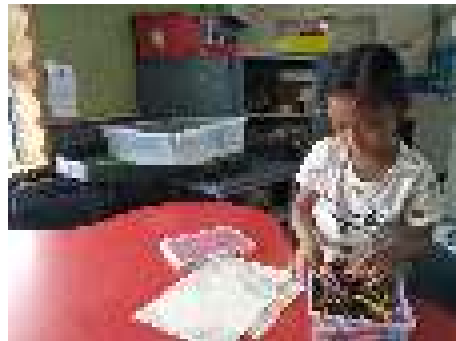
Health and Safety measures

In line with the guidance from the Ministry of Education anyone returning to work will have returned a negative test. At the last vaccine session last week, the team had available a 'swabber' who was able to take tests on site. Great for those of us due a second test before this week started. Principal demonstrates her best pūkana!

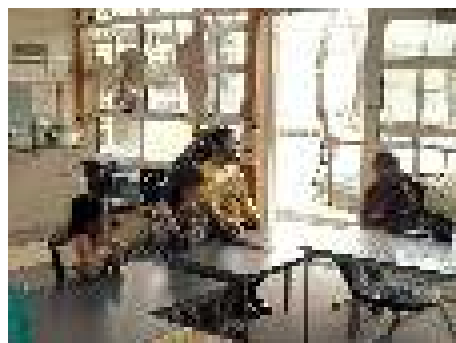


Nau mai hoki mai

On Monday Oaklynn welcomed back the first group of ākonga in our on site bubbles across the school. Everyone was pleased to reconnect again kanohi ki te kanohi. As you can see from the smiling faces in this collection of photos from a range of classes.



Our **junior learners** enjoy inside learning time and outside recreation time. New trampolines and water trays were purchased with Ministry of Education funding to support the 'return to school'. Being outside is best for our ākonga and the new equipment encourages fun outdoors.





Our intermediate group at **Avondale Intermediate** join the rest of their class in an online ZOOM session, have solo time and outdoor recreation time too.



Green Bay High School bubble - senior students look pretty happy to be back together again and also participated in a ZOOM session with their other classmates and just enjoyed 'hanging out'.



OakTEC rangatahi returned to an unusual start as one of the shop owners forgot to unset their alarm and the building had to be evacuated. 'What a great way to practice our fire drill' says Bobbie - looks like the ākonga were less impressed!



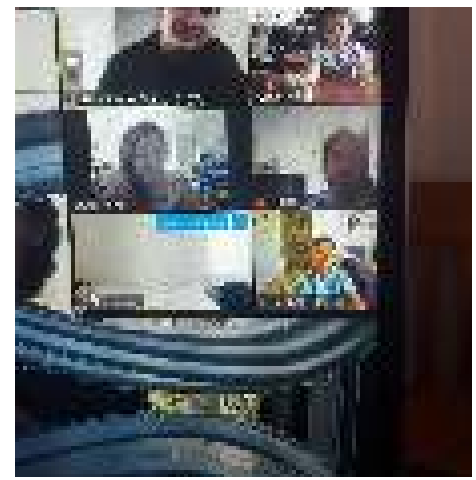


At Base, learners enjoy being back with familiar fun and friendly faces indoors and out.

Learning for Home

Many of our learners are continuing to remain and home and learn from home - teachers are providing programmes for these learners too. It looks different for each learner and is blended in the way it is delivered and may include:

- One on one facetime / calls
- Accessing online programmes
- Learning hard packs sent home
- Zoom sessions
- Oaklynn youtube
- Story Park videos / posts



These New Entrant learners continue to learn at home via zoom. Our teachers will work in class half the week, and support zoom school, hard packs, sensory packs and our toy library for half the week.

Principal's Sabbatical

In 2020 I was most fortunate to be awarded a Principal's sabbatical for a term in 2021 - which the Board and I postponed (because of my concussion last year) to 2022. This means that I will be away from school during Term 1 next year. In my absence Pilar Romero will be our school's Acting Principal. She has the absolute full backing of both the SMT and the BOT. I know that with her experience and skills she will steer the ship well in my absence. I have every faith in the team around her to support her in this role.

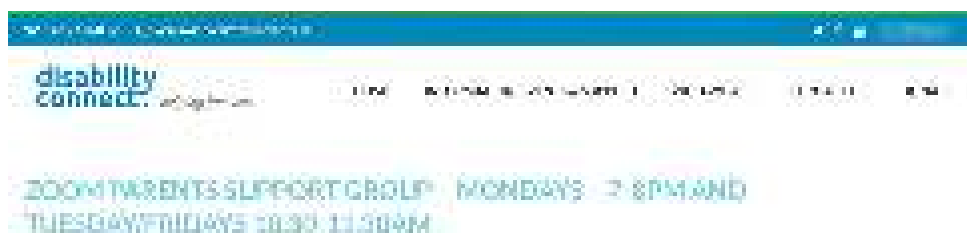
"The Primary Principals' Sabbatical is a period of 10 school weeks' paid leave for you to undertake professional learning, reflection and rejuvenation. Each year there are 105 sabbaticals available to principals covered by the Primary Principals' Collective Agreement (PPCA), in state or state-integrated primary schools."

During my study time I plan to investigate the following elements of our practice and how they link together.

- School leadership, Educational / relational neuroscience and Te Ao Māori - Te Ara Whakamana

The study will involve visiting other schools in Aotearoa NZ that may have some of these practices happening in their schools. My goal is to create a framework / guiding document that pulls these elements together with Oaklynn's values.

Support for whānau



[Link to Disability Connex site - here](#)

MANAAKITANGA

Manaakitanga is one of Oaklynn's core values - it is a beautiful concept from Te Ao Māori (Māori world) and means "hospitality, kindness, generosity, support - the process of showing respect, generosity and care for others".



Oaklynn's manaakitanga initiative can support our community in many ways during lockdown:

- Purchasing food, delivering food and other items to homes
- Purchasing refurbished chromebooks for those ākonga without devices
- \$70 buys a food parcel (like the one in the pic) for a family

Here's how you can help - Make a \$\$ donation to the school manaakitanga account 12-3109-0012500-00 with reference manaakitanga

manaakitanga@oaklynn.school.nz is the email to use if you need to reach out for assistance.

Community Support

A big shout out to the organisations below who supported our families to have food throughout the school break. Disability Connect are currently applying for extra funds to ensure they can continue to support our families in an ongoing way.

THANK YOU



Metro Auckland



...taikura.trust

Thank you to Disability Connect for reaching out to us and confirming that they are able to provide food parcels for our whānau again through to **Christmas.**

This is great news and gives our families certainty in these difficult times. Disability Connect is supported by Steven at New World Metro Queen Street and his team, Foundation North and Taikura Trust to support our families with food.

0800 400 000 | www.disabilityconnect.org.nz

disability connect. helping families

Noho ora mai

Louise Doyle

Principal

Upsize your reo

| Te reo used in our updates | In english |
|--|---|
| koia kei a koutou | Good on you / you're awesome |
| Pūkana | “to stare wildly, dilate the eyes - done by both genders when performing haka and waiata to emphasise particular words and to add excitement to the performance.” |
| Nau mai hoki mai | Welcome back |
| Kanoahi ki te kanoahi | Face to face |
| Kia ora e te whānau o Oaklynn, Ngā mihi nui ki a koutou ki to koutou whānau hoki. | Hello to the family of Oaklynn Many greetings /wishes to you all and we hope your family is well. |
| Kaiako | Teacher |
| Kaiawhina | Support staff |
| Tamariki | Children |
| Rangatahi | Young adults |
| Whānau | Family |
| Ākonga | Learner |
| Manaakitanga | hospitality, kindness, generosity, support - the process of showing respect, generosity and care for others. |
| Mahi | Work |

New Zealand COVID-19 Protection Framework

Factors for considering uplift between levels: vaccination coverage, capacity of the health and disability system, testing, contact tracing and case management capacity, and the transmission of COVID-19 within the community, including its impact on key population groups.

Localised lockdowns will be used as part of the public health response in the near future and at all levels, and there may still be a need to ease wider lockdowns (similar to the measures in Alert Level 3 or 4).

Vaccination certificates: Requiring vaccination certificates will be optional for many locations. There are some higher risk settings where this will be a requirement in order to open to the public. Some places won't be able to introduce vaccination requirements to ensure everyone can access their services, including aged care facilities and other males.

| | | | |
|--------|--|--|---|
| GREEN | <p>COVID-19 remains New Zealand's leading overall impact cause.</p> <p>Lowest community transmission.</p> <p>COVID-19 transmission is at a managed/controlled level.</p> <p>Whole of health system's needs respond – primary care, public health, and hospitals.</p> | <p>General settings</p> <ul style="list-style-type: none"> • Blood keeping/cleaning required • Face coverings mandatory on flights, air cargo/pilots/crews • Public facilities – open <p>No limits if vaccination certificates are used for:</p> <ul style="list-style-type: none"> • Hospitals • Gatherings (e.g. weddings, places of worship, marae) <p>If vaccination certificates are not used, the following restrictions apply:</p> <ul style="list-style-type: none"> • Hospitals – up to 100 people based on 1m distancing, seated and separated • Gatherings (e.g. weddings, places of worship, marae) – up to 100 people, based on 1m distancing | <ul style="list-style-type: none"> • Retail – open • Workplaces – open • Education (schools, ECE, tertiary) – open • Specified outdoor community events – allowed • Events (indoor/outdoor) • Close contact businesses • Gyms • Gyms – up to 100 people based on 1m distancing |
| | <p>Increasing community transmission with increasing pressure on health system.</p> <p>Whole of health system's capacity is under medical surveillance – primary care, public health, and hospitals.</p> <p>Increasing risk to other populations.</p> | <p>General settings</p> <ul style="list-style-type: none"> • Blood keeping/cleaning required • Face coverings mandatory on flights, public transport, retail, hotel, public venues, recommended whenever leaving the house <p>No limits if vaccination certificates are used for:</p> <ul style="list-style-type: none"> • Hospitals • Gatherings (e.g. weddings, places of worship, marae) <p>If vaccination certificates are not used, the following restrictions apply:</p> <ul style="list-style-type: none"> • Hospitals – contactless only • Gatherings (e.g. weddings, places of worship, marae) – up to 100 people, based on 1m distancing | <ul style="list-style-type: none"> • Public facilities – open with capacity limits based on 1m distancing • Retail – open with capacity limits based on 1m distancing • Events (indoor/outdoor) • Close contact businesses • Gyms • Workplaces – open • Education – open with public health measures in place • Specified outdoor community events – allowed • Close contact businesses, events (places/marae) and gyms are not able to operate |
| ORANGE | <p>Enter markets to protect health system – system being overwhelmed number of hospitalizations.</p> <p>Enter markets to protect at risk populations.</p> | <p>General settings</p> <ul style="list-style-type: none"> • Blood keeping/cleaning required • Face coverings mandatory on flights, public transport, retail, hotel, public venues, recommended whenever leaving the house <p>With vaccination certificates, the following restrictions apply:</p> <ul style="list-style-type: none"> • Hospitals – up to 100 people, based on 1m distancing, seated and separated • Gatherings (e.g. weddings, places of worship, marae) – up to 100 people, based on 1m distancing <p>If vaccination certificates are not used, the following restrictions apply:</p> <ul style="list-style-type: none"> • Hospitals – contactless only • Gatherings (e.g. weddings, places of worship, marae) – up to 100 people | <ul style="list-style-type: none"> • Public facilities – open with up to 100 people, based on 1m distancing • Retail – open with capacity limits based on 1m distancing • Workplaces – working from home encouraged • Education – schools and ECE open with public health measures and controls • Specified outdoor community events – allowed with capacity limits • Gyms – up to 100 people based on 1m distancing • Tertiary education – restrictions required for onsite delivery, with capacity based on 1m distancing • Close contact businesses, events (places/marae) and gyms are not able to operate • Tertiary education – distance learning only |
| RED | | | |