

## Community update 26/10

Kia ora e te whānau,

We continue to find ourselves in lockdown. We are aware it makes life at home in your bubbles difficult and tiring for all. Please stay in touch with your teacher or class's section leader to let us know how we can best support you.

### The Prime Minister's announcement

The Prime Minister's announcement on Friday 22nd October stated that: "Auckland will move into the new framework (see below) when 90 percent of eligible population in each of the three DHBs are fully vaccinated." This means that we will remain in Level 3 step 1 for a while longer yet and that

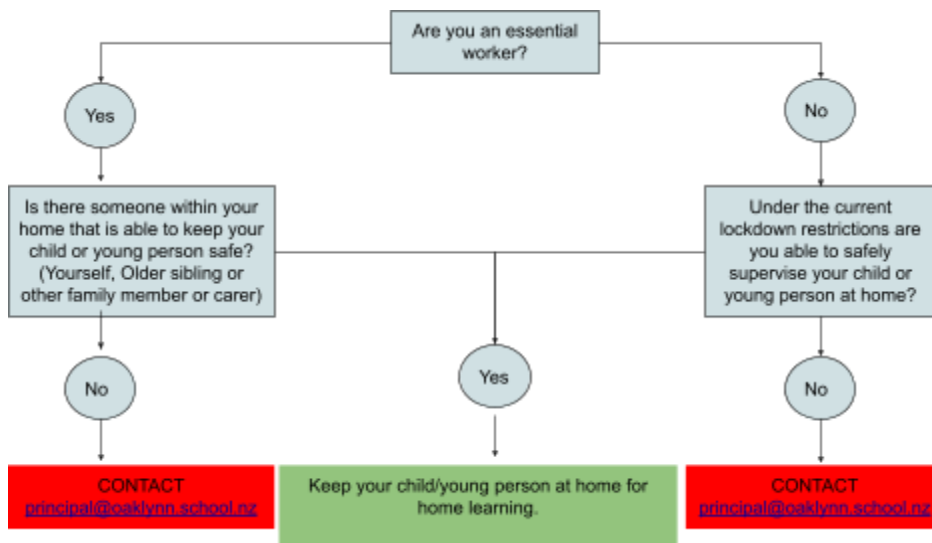
**ALL learners will remain at home and continue with their "Learning from Home" programme until further notice.**

### Level 3 onsite programme

The Ministry of Education has stated that schools may have a very small number of students attend an on-site programme if they don't have an appropriate carer at home.

Oaklynn has accepted a small number of students to return to school this week because either;

- Both parents / carers are essential workers and there is no appropriate care at home OR
- They are no longer able to keep their child or young person safe at home.



If you are unable to safely supervise your child or young person at home please contact me directly on [principal@oaklynn.school.nz](mailto:principal@oaklynn.school.nz)

## LEARNING FROM HOME

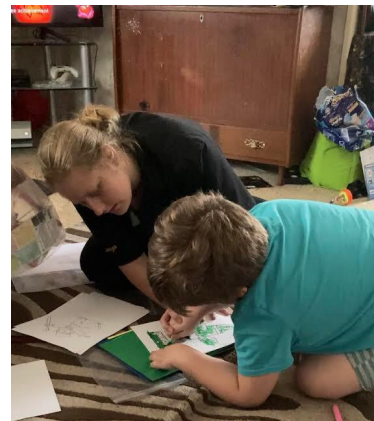
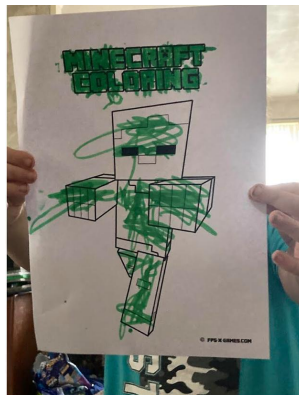
Looks different for each learner and is blended in the way it is delivered and may include:

- One on one facetime / calls
- Accessing online programmes
- Learning hard packs sent home
- Zoom sessions
- Oaklynn youtube
- Story Park videos / posts

**HARD  
PACKS  
SENSORY**



**HARD PACKS  
LEARNER**



Seth - one of our Outreach learners and his sister Danielle.

**ORGANISATION  
FOR  
LEARNING FROM  
HOME**

Timetable for my zoom classes				
Monday	Tuesday	Wednesday	Thursday	Friday
H & PE 10:30	MUSIC 10:30		ONE TO ONE 10:00	CLASS 11:00
Meeting ID: 746 3433 8257 Passcode: 9hp82b	Meeting ID: 802 9483 3889 Passcode: 88j4AX		Lessons will email the link	Meeting ID: 400 075 995 Passcode: 192174

Checklist for my work	
H & PE Zoom	<input type="checkbox"/>
Music Zoom	<input type="checkbox"/>
Class Zoom	<input type="checkbox"/>
One to One Zoom	<input type="checkbox"/>
Reading - Sunshine Classic	<input type="checkbox"/> <input type="checkbox"/> <input type="checkbox"/> <input type="checkbox"/>
Talkabout Activity	<input type="checkbox"/>
Reading Comprehension Worksheet	<input type="checkbox"/> <input type="checkbox"/> <input type="checkbox"/> <input type="checkbox"/>
Maths - Study Ladder	<input type="checkbox"/> <input type="checkbox"/> <input type="checkbox"/> <input type="checkbox"/>
Maths games / worksheets	<input type="checkbox"/> <input type="checkbox"/> <input type="checkbox"/> <input type="checkbox"/>

Rachael from Green Bay School and Wahiebah for Avondale collaboration

**ZOOM SESSIONS**



Bethany from New Lynn Primary

**Let's Draw!**

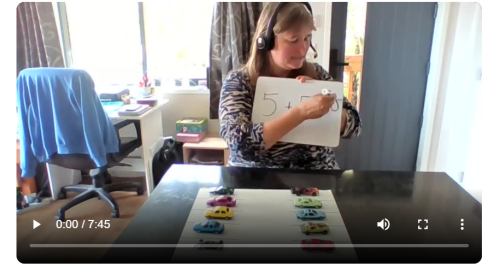


Debbie from OakTEC posts a stop motion film!

**SESSIONS POSTED ON STORYPARK**



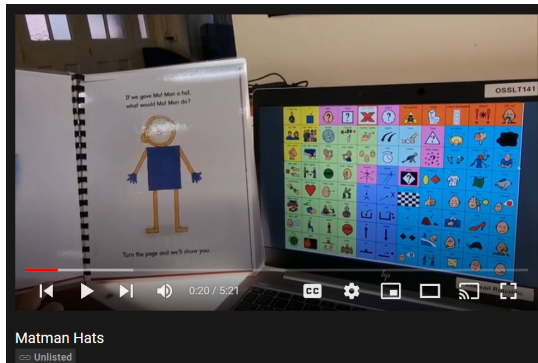
Cosh from Room 3 Base reads a story



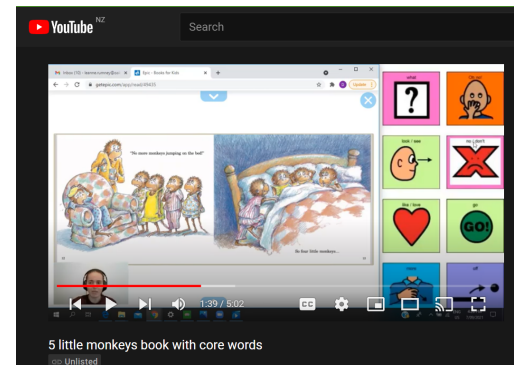
Next we helped to do some maths too. Here are some of the ones we did and an extra one if you want to have a go.

Naomi from Arahoe posts a Maths session

**SESSION POSTED ON OAKLYNN YOUTUBE CHANNEL**



Abegail from Te Ara Hou leads the session



Leanne SLT reads a story and uses the CORE board

**Support for whānau**

+64 9 636 0351 admin@disabilityconnect.org.nz [Twitter](#) [Facebook](#) [LinkedIn](#) Search...



[HOME](#) [INFORMATION, EVENTS & SUPPORT](#) [WHO WE ARE](#) [CONTACT US](#) [DONATE](#)

**ZOOM PARENTS SUPPORT GROUP - MONDAYS - 7-8PM AND TUESDAY/FRIDAYS 10.30-11.30AM**

[Link to Disability Connex site - here](#)

## MANAAKITANGA

Manaakitanga is one of Oaklynn's core values - it is a beautiful concept from Te Ao Māori (Māori world) and means "hospitality, kindness, generosity, support - the process of showing respect, generosity and care for others".



Oaklynn's manaakitanga initiative can support our community in many ways during lockdown;

- Purchasing food, delivering food and other items to homes
- **\$70 buys a food parcel (like the one in the pic) for a family**

### Here's how you can help

Going on our list of helpers email - [manaakitanga@oaklynn.school.nz](mailto:manaakitanga@oaklynn.school.nz)

Make a \$\$ donation to the school manaakitanga account **12-3109-0012500-00** with reference **manaakitanga**

**Oaklynn's manaakitanga fund** has continued to support the purchase of extra food parcels where needed.

The fund has also been used to purchase a **special gift** for those experiencing a hardship or loss at this time.

Many of our community have experienced a death in their family, a child in hospital or an injury or general 'tough time' and whilst we know that these events are part of the pattern of everyday life - experiencing them in lockdown and without extended family can make things extra hard.

So we have sent a gift from our whole community to let them know we are thinking of them.

## How can we help?

We are very aware that this length of time in Lockdown can put extra strain on families. Living with these restrictions can be very upsetting for our tamariki and rangatahi.

**If you need help please reach out and we can try to support you.**

For any need - no matter how big or small please contact [manaakitanga@oaklynn.school.nz](mailto:manaakitanga@oaklynn.school.nz)

## Community Support

A big shout out to the organisations below who supported our families to have food throughout the school break. Disability Connect are currently applying for extra funds to ensure they can continue to support our families in an ongoing way.



THANK YOU



Metro Auckland



...taikuratrust

Thank you to Disability Connect for reaching out to us and confirming that they are able to provide food parcels for our whānau again through to **Christmas.**

This is great news and gives our families certainty in these difficult times

Disability Connect is supported by Steven at New World Metro Queen Street and his team, Foundation North and Taikura Trust to support our families with food.

+64 9 636 0351 admin@disabilityconnect.org.nz

disability connect. helping families

### All staff interacting with learners or whanau will be vaccinated

The Board of Trustees has agreed unanimously, that in order to provide a safe environment for our staff and learners any staff having **face to face interaction with any learner or whānau** associated with our school **will have been doubly vaccinated.**

We believe this is the most proactive and preventative action we can take to keep our vulnerable learners safe.

This applies to;

- Supporting the onsite Level 3 programme
- If and when we return to school this term
- Any orthotics / physiotherapy clinics
- Any other activity where staff come into close contact with learners and their whānau.

Staff will also have returned a negative test result prior to coming in to work or doing any of the above work for the first time.

Noho ora mai

Louise Doyle

Principal

Oaklynn School

## New Zealand COVID-19 Protection Framework

**Factors for considering a shift between levels:** vaccination coverage, capacity of the health and disability system; testing, contact tracing and case management capacity; and the transmission of COVID-19 within the community, including its impact on key populations.

**Localised lockdowns:** will be used as part of the public health response in the new framework across all levels, and there may still be a need to use wider lockdowns (similar to the measures in Alert Level 3 or 4).

**Vaccination certificates:** Requiring vaccination certificates will be optional for many locations. There are some higher-risk settings where they will be a requirement in order to open to the public. Some places won't be able to introduce vaccination requirements, to ensure everyone can access basic services, including supermarkets and pharmacies.

<p><b>GREEN</b></p> <p>COVID-19 across New Zealand, including sporadic imported cases.</p> <p>Limited community transmission.</p> <p>COVID-19 hospitalisations are at a manageable level.</p> <p>Whole of health system is ready to respond – primary care, public health, and hospitals.</p>	<p><b>General settings</b></p> <ul style="list-style-type: none"> <li>Record keeping/scanning required</li> <li>Face coverings mandatory on flights, encouraged indoors</li> <li>Public facilities – open</li> </ul>	<ul style="list-style-type: none"> <li>Retail – open</li> <li>Workplaces – open</li> <li>Education (schools, ECE, tertiary) – open</li> </ul>	<ul style="list-style-type: none"> <li>Specified outdoor community events – allowed</li> </ul>
	<p><b>No limits if vaccination certificates are used for:</b></p> <ul style="list-style-type: none"> <li>Hospitality</li> <li>Gatherings (e.g. weddings, places of worship, marae)</li> </ul>	<ul style="list-style-type: none"> <li>Events (indoor/outdoor)</li> <li>Close contact businesses</li> </ul>	<ul style="list-style-type: none"> <li>Gyms</li> </ul>
	<p><b>If vaccination certificates are not used, the following restrictions apply:</b></p> <ul style="list-style-type: none"> <li>Hospitality – up to 100 people, based on 1m distancing, seated and separated</li> <li>Gatherings (e.g. weddings, places of worship, marae) – up to 100 people, based on 1m distancing</li> </ul>	<ul style="list-style-type: none"> <li>Events (indoor/outdoor) – up to 100 people based on 1m distancing, seated and separated</li> <li>Close contact businesses – face coverings for staff, 1m distancing between customers</li> </ul>	<ul style="list-style-type: none"> <li>Gyms – up to 100 people, based on 1m distancing</li> </ul>
<p><b>ORANGE</b></p> <p>Increasing community transmission with increasing pressure on health system.</p> <p>Whole of health system is focusing resources but can manage – primary care, public health, and hospitals.</p> <p>Increasing risk to at risk populations.</p>	<p><b>General settings</b></p> <ul style="list-style-type: none"> <li>Record keeping/scanning required</li> <li>Face coverings mandatory on flights, public transport, taxis, retail, public venues, encouraged elsewhere</li> </ul>	<ul style="list-style-type: none"> <li>Public facilities – open with capacity limits based on 1m distancing</li> <li>Retail – open with capacity limits based on 1m distancing</li> </ul>	<ul style="list-style-type: none"> <li>Workplaces – open</li> <li>Education – open with public health measures in place</li> <li>Specified outdoor community events – allowed</li> </ul>
	<p><b>No limits if vaccination certificates are used for:</b></p> <ul style="list-style-type: none"> <li>Hospitality</li> <li>Gatherings (e.g. weddings, places of worship, marae)</li> </ul>	<ul style="list-style-type: none"> <li>Events (indoor/outdoor)</li> <li>Close contact businesses</li> </ul>	<ul style="list-style-type: none"> <li>Gyms</li> </ul>
	<p><b>If vaccination certificates are not used, the following restrictions apply:</b></p> <ul style="list-style-type: none"> <li>Hospitality – contactless only</li> </ul>	<ul style="list-style-type: none"> <li>Gatherings (e.g. weddings, places of worship, marae) – up to 50 people, based on 1m distancing</li> </ul>	<ul style="list-style-type: none"> <li>Close contact businesses, events (indoor/outdoor) and gyms are not able to operate</li> </ul>
<p><b>RED</b></p> <p>Action needed to protect health system – system facing unsustainable number of hospitalisations.</p> <p>Action needed to protect at-risk populations.</p>	<p><b>General settings</b></p> <ul style="list-style-type: none"> <li>Record keeping/scanning required</li> <li>Face coverings mandatory on flights, public transport, taxis, retail, public venues, recommended whenever leaving the house</li> </ul>	<ul style="list-style-type: none"> <li>Public facilities – open with up to 100 people, based on 1m distancing</li> <li>Retail – open with capacity limits based on 1m distancing</li> <li>Workplaces – working from home encouraged</li> </ul>	<ul style="list-style-type: none"> <li>Education – schools and ECE open with public health measures and controls</li> <li>Specified outdoor community events – allowed with capacity limits</li> </ul>
	<p><b>With vaccination certificates, the following restrictions apply:</b></p> <ul style="list-style-type: none"> <li>Hospitality – up to 100 people, based on 1m distancing, seated and separated</li> <li>Gatherings (e.g. weddings, places of worship, marae) – up to 100 people, based on 1m distancing</li> </ul>	<ul style="list-style-type: none"> <li>Events (indoor/outdoor) – up to 100 people based on 1m distancing, seated and separated</li> <li>Close contact businesses – public health requirements in place</li> </ul>	<ul style="list-style-type: none"> <li>Gyms – up to 100 people, based on 1m distancing</li> <li>Tertiary education – vaccinations required for onsite delivery, with capacity based on 1m distancing</li> </ul>
	<p><b>If vaccination certificates are not used, the following restrictions apply:</b></p> <ul style="list-style-type: none"> <li>Hospitality – contactless only</li> <li>Gatherings (e.g. weddings, places of worship, marae) – up to 10 people</li> </ul>	<ul style="list-style-type: none"> <li>Close contact businesses, events (indoor/outdoor) and gyms are not able to operate</li> <li>Tertiary education – distance learning only</li> </ul>	