



07/09/2021 UPDATE to community

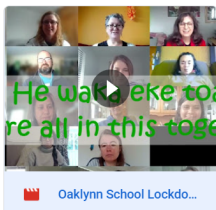
## Level 4 continues

Kia ora e te whānau,

I hope you are all managing ok in your mirumiru (bubble). I for one have enjoyed getting out for a walk in the sun over the weekend. If you are not doing OK and need support - please reach out to our confidential email [manaakitanga@oaklynn.school.nz](mailto:manaakitanga@oaklynn.school.nz) or contact your teacher.

At this stage Auckland will remain in Level 4 Lockdown for another week until 11.59 pm **Tuesday 14th September**. This means that **SCHOOL continues to be CLOSED** and we continue to learn from home.

## LOCKDOWN BOOGIE



I hope you all had a chance to watch our **Oaklynn Lock down Boogie** over the weekend and have a giggle at your Oaklynn staff having fun. We hope it brought a smile. If you missed it - here it is again. A big shout out to Bobbie Chadderton - our senior teacher at OakTEC who put this together for us!

## Vaccine update

### SESSION at Oaklynn booked - Thursday 23rd September

- **FIRST VACCINE** Any staff and their families and students and their families including anyone over the age of 12 years
- **SECOND VACCINE** any staff and their families and any students and their families
- If you would like to have your vaccine at Oaklynn please email [feedback@oaklynn.school.nz](mailto:feedback@oaklynn.school.nz) by Thursday 16th September to book.
- We will create a booking system - where we give each whānau a scheduled allotted hour slot on that day.
- You must have an appointment slot to be able to take up the opportunity of having the vaccination at school (Oaklynn Special School, 20 Mayville Ave, New Lynn).
- We will advise your appointment slot after Thursday 16th once all requests have been received.

## LEARNING FROM HOME

### How are we doing?

Our teachers, therapists and support staff are working very hard putting together zoom sessions, and uploading activities and resources to our various platforms - **AND** we want to know are we reaching everyone that wants to connect with school? We take the lead from each of you and respect each whānau decision as to what is important for your tamariki / ākonga.

**Your child / young person's teacher** will be in touch over the next few days to check in and see how you're going.

## ZOOM sessions in action

I continue to pop in and out of ZOOM sessions each week - it's a great way to see our young people and their whānau - thank you for letting us into your homes.

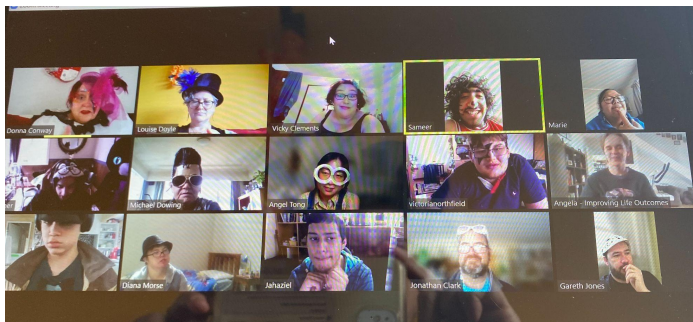
Staff are also using ZOOM in a variety of ways to stay connected and learn.

**Whanaungatanga - one of Oaklynn's core values**  
**Relationships based on sense of belonging and shared experiences**

ZOOM is such a great way to connect with each other and keep our sense of community and sense of belonging strong in these times.

## ZOOM and our learners

### Greenbay High School Te Aratika Tahī



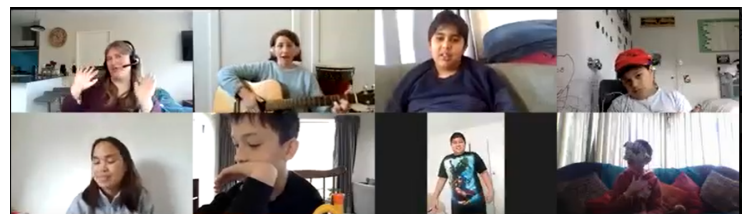
### AIS and GBS Music with Rachel



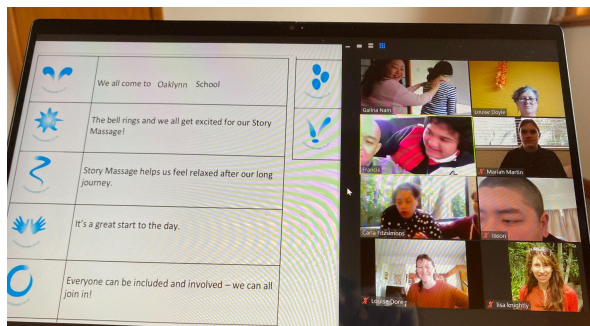
### St Leonards Rd School - Melina's class



### Juniors music with Rachel



### Base School - once upon a touch - sensory story

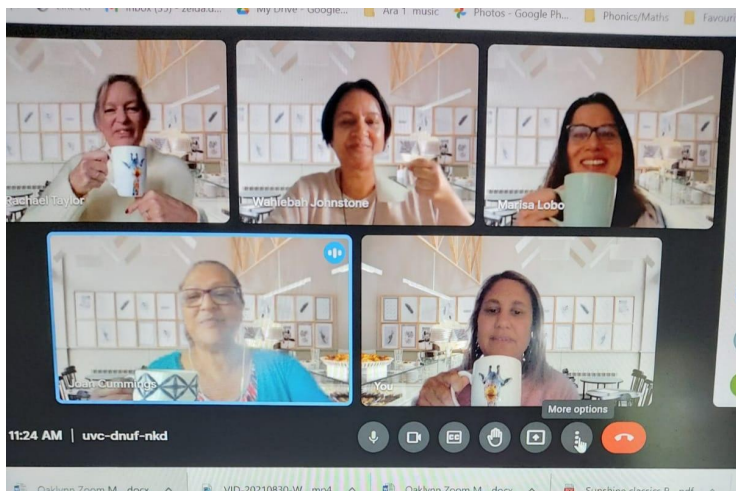


### Arahoe 2

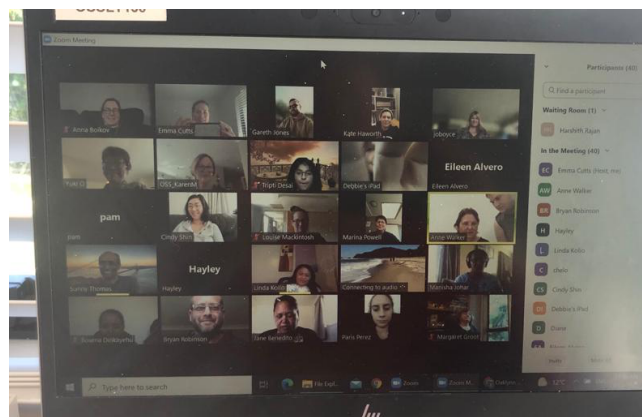


## ZOOM and our staff

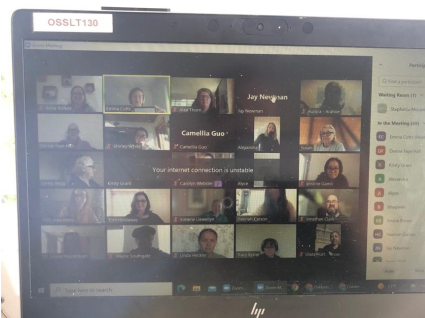
### Intermediate teachers having a catch up with Joan



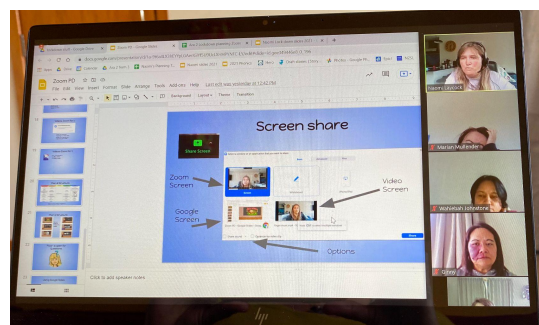
### Oaklynn teacher aides having a professional learning session



### Our Outreach team led learning sessions for over 40 teacher aides from our local schools last week.



### Staff learning how to do a good ZOOM session



## Hardpack resources

- We said that we would review the decision on hard pack resources in a week's time.
- We are approving the making of hard pack resources for learners who are not able to engage in ZOOM or other video based activities and may want something more.
- **Please contact your teacher** if you require a hard pack resource because your child or young person is not able to access online activities with us.

## ADVANCED NOTICE - LEVEL 3

In consultation with the Board of Trustees we have made the decision that Oaklynn School including all satellites will remain closed in the initial stages of Level 3.

Please note we are following the directive from Covid-19 Bulletin from the **Secretary for Education** on 29 August as follows :

***"Residential Specialist Schools and Day Specialist Schools will not resume in the early stages of Alert Level 3 for children to physically attend. Teaching staff can return to the school premises and support parents and children at home. They will develop plans for children to return to physical attendance if public health measures can be managed later in the Alert Level 3 period."***

The Board of Trustees have also decided that we will not be able to have teacher aides go into family homes in Level 3.

We will continue to work with you to support learning from home as best we can.

I trust you understand that these decisions have been made with the health and wellbeing of our students, their whanau and our staff at the forefront. We have such a vulnerable population, that we must exercise extra caution.

## MANAAKITANGA

is one of Oaklynn's core values - it is a beautiful concept from Te Ao Māori (Māori world) and means "hospitality, kindness, generosity, support - the process of showing respect, generosity and care for others".

### THANK YOU



**Presbyterian Support** who have again been supporting us with food parcels this week.  
**New World Green Bay** who have been supporting the school by sourcing items for some learning packs we are putting together for the future.



Oaklynn's manaakitanga initiative can support our community in many ways during lockdown;

- Purchasing food
- **\$70 buys a food parcel (like the one in the pic) for a family**
- Delivering food and other items to homes

#### Here's how you can help

Going on our list of helpers email - [manaakitanga@oaklynn.school.nz](mailto:manaakitanga@oaklynn.school.nz)

Make a \$\$ donation to the school manaakitanga account **12-3109-0012500-00** with reference **manaakitanga**

**IF YOU NEED HELP** - email confidentially to [manaakitanga@oaklynn.school.nz](mailto:manaakitanga@oaklynn.school.nz) or reach out to your teacher or someone else you know at Oaklynn. We are here to help you.

## And lastly

Our wonderful property manager / caretaker Danny McGonagle is retiring soon and we need someone to fill the position - if you know of anyone that could work in our unique school environment - please to go to our website

<http://www.oaklynn.school.nz/news/vacancies/>

Stay home, stay safe, be kind and kia kaha

Ngā mihi nui

**Louise Doyle,**

Principal





Mālō e lelei, Talofa lava, Kia orana, Malo ni, Fakaalofa lahi atu, Ni sa bula vinaka, Fakatalofa atu, Kam na mauri, tēnā koutou and warm Pacific greetings.

## [Ola Lelei Pacific helpline](#)

**0800 OLA LELEI (0800 652 535)** is a FREE national Pacific helpline anyone can call if they are feeling worried, stressed or concerned about anything and need someone to talk to, help and support.

The helpline runs Monday to Friday, 8.30am to 8.30pm. The OLA LELEI team speaks Samoan, Tongan, Cook Islands Māori and English. All conversations are confidential.

## [Prepare Pacific website](#)

<https://preparepacific.nz/>

This website has been set up to help get information out to our Pacific communities to help us in the battle against coronavirus. Information, updates and advice are available in Pacific languages.

## [Foodbanks](#)

✓ The Fono (Pasifika only) **0800 366 648** or email [socialservices@thefono.org](mailto:socialservices@thefono.org)

✓ <https://preparepacific.nz/resources/food-banks/>

## [Vaka Tautua](#)

Our team is committed to improving the health and wellbeing of our Pacific peoples, families and communities.

We have a disability information and advisory service.

Manukau and Henderson offices **0800 825 282**

<https://www.vakatautua.co.nz/our-services>