



Term 3 2022

Community Wellbeing Update 19/07/2022

Tēnā koutou katoa - whānau and staff,

We trust you have had a restful break and have not been troubled by the winter illnesses creeping in. As we head into Term 3 we are preparing and pre-warning all of our community that Term 3 may look different and we may need to close classes during this term.

We're all tired of Covid, but there's no avoiding the fact that case numbers and hospitalisations are rising, and the worst is yet to come. Winter will also bring its own group of illnesses and so we are anticipating another tough term. We are expecting that we will have times when we have many staff away and may not be able to cover classes.

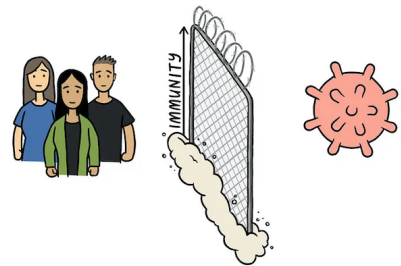
Wishing it's over doesn't
make it over.

What is the science telling us?

The new wave means you're more at risk of getting Covid.

The reality is that your chances of encountering someone infectious with Covid-19 now are higher than they were six weeks ago, and they'll continue to increase.

Waning immunity combined with a changing virus means that even if you're fully vaccinated and/or have recently had omicron, you are still at risk.



Already had Covid? That doesn't mean
you're invincible

[Link to article here](#)

There are some things we can do to keep everyone safe

Wear our masks indoors



When it rains, we wear a jacket.



When we're in a car, we wear a seatbelt.



When there's Covid in the community, we wear a mask.

Stay home when we are unwell (with any illness) Or self isolating



We may call you to collect your tamariki / rangatahi

Ventilation to keep rooms well ventilated



We will open windows and use air purifiers in all rooms and office spaces

Close classes when we don't have enough staff

During Term 2 we struggled many times to have enough staff in classes every day. This has put strain on ākonga and staff and may make classes unsafe.

In Term 3 we **may decide to close individual classes or units** as a last resort when we don't have enough staff.

We would like to take this opportunity to thank you all for your continued support during these tough times. We apologise in advance for any inconvenience that may be caused by our decisions during this upcoming term.

Nāku noa, nā Louise ([She/Her](#))

(Yours sincerely)

Principal

Oaklynn School

0272038238

principal@oaklynn.school.nz